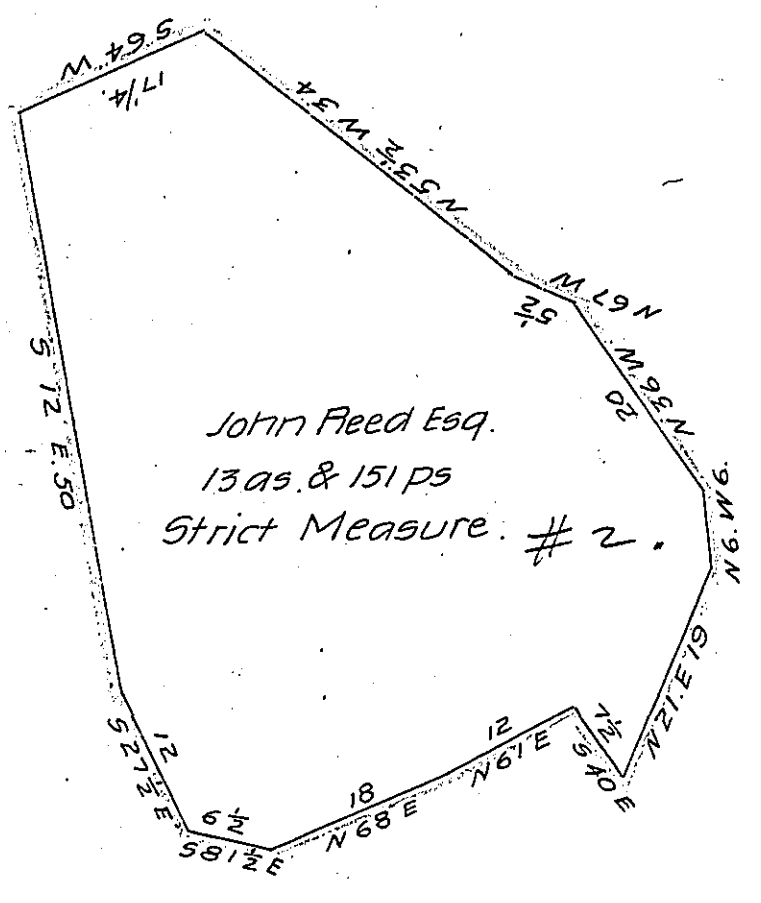


York County Shore

Lancaster County Shore



A Draught of an Island situate in the River Susquehanna
 Called Feeds Island No. 2, about ten perches up the river from Feeds
 Island No. 1, situate in Martick Township Lancaster County containing
 thirteen acres and one hundred and fifty one perches of land strict
 Measure Surveyed in Pursuance of a Warrant dated the 10th of Nov.
 ember 1813, granted unto John Reed November 12th 1813.

Pr. Jacob Hibshman D.S.

To Andrew Porter Esqr.

S. General.

IN TESTIMONY that the above is a copy of the original remaining on file in
 the Department of Internal Affairs of Pennsylvania, made
 conformably to an Act of Assembly approved the 16th day of
 February, 1833, I have hereunto set my Hand and caused
 the Seal of said Department to be affixed at Harrisburg,
 this twentieth day of September 1906

Isaac D. Brown
 Secretary of Internal Affairs.